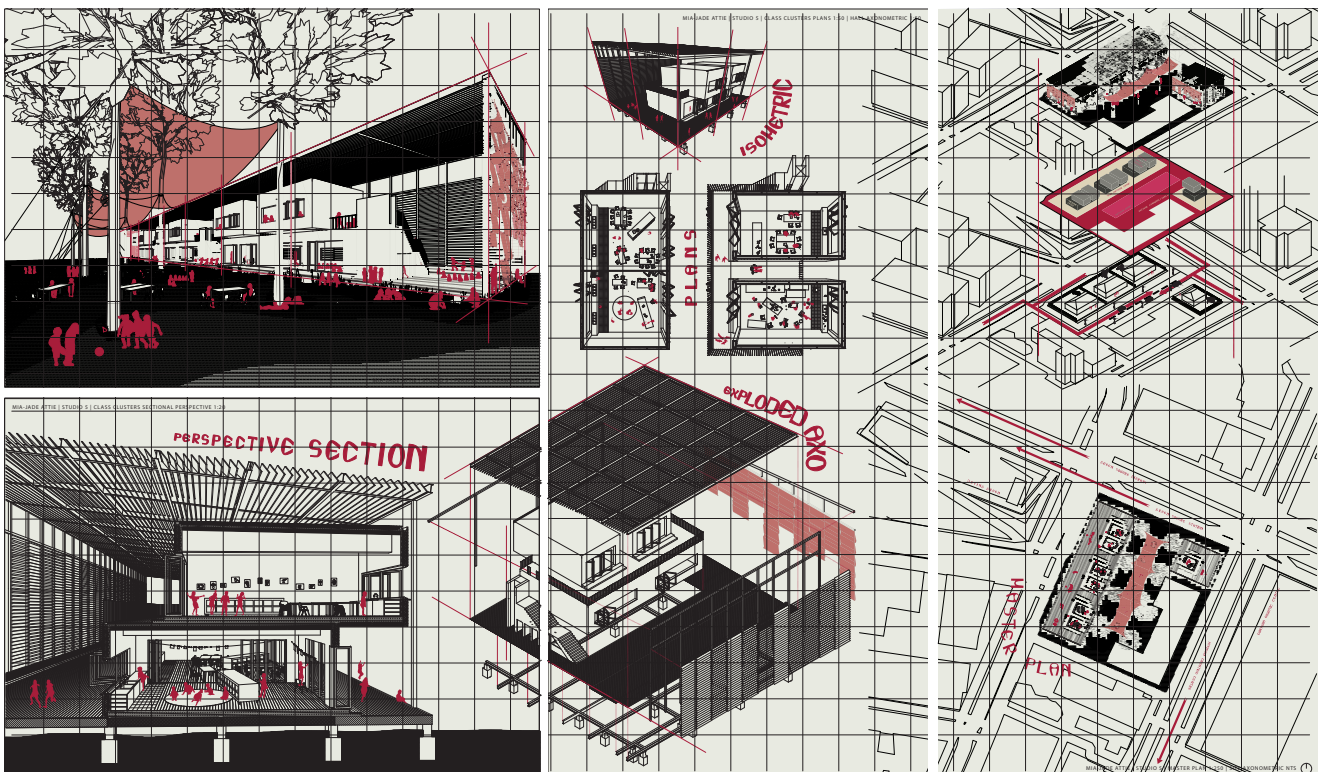


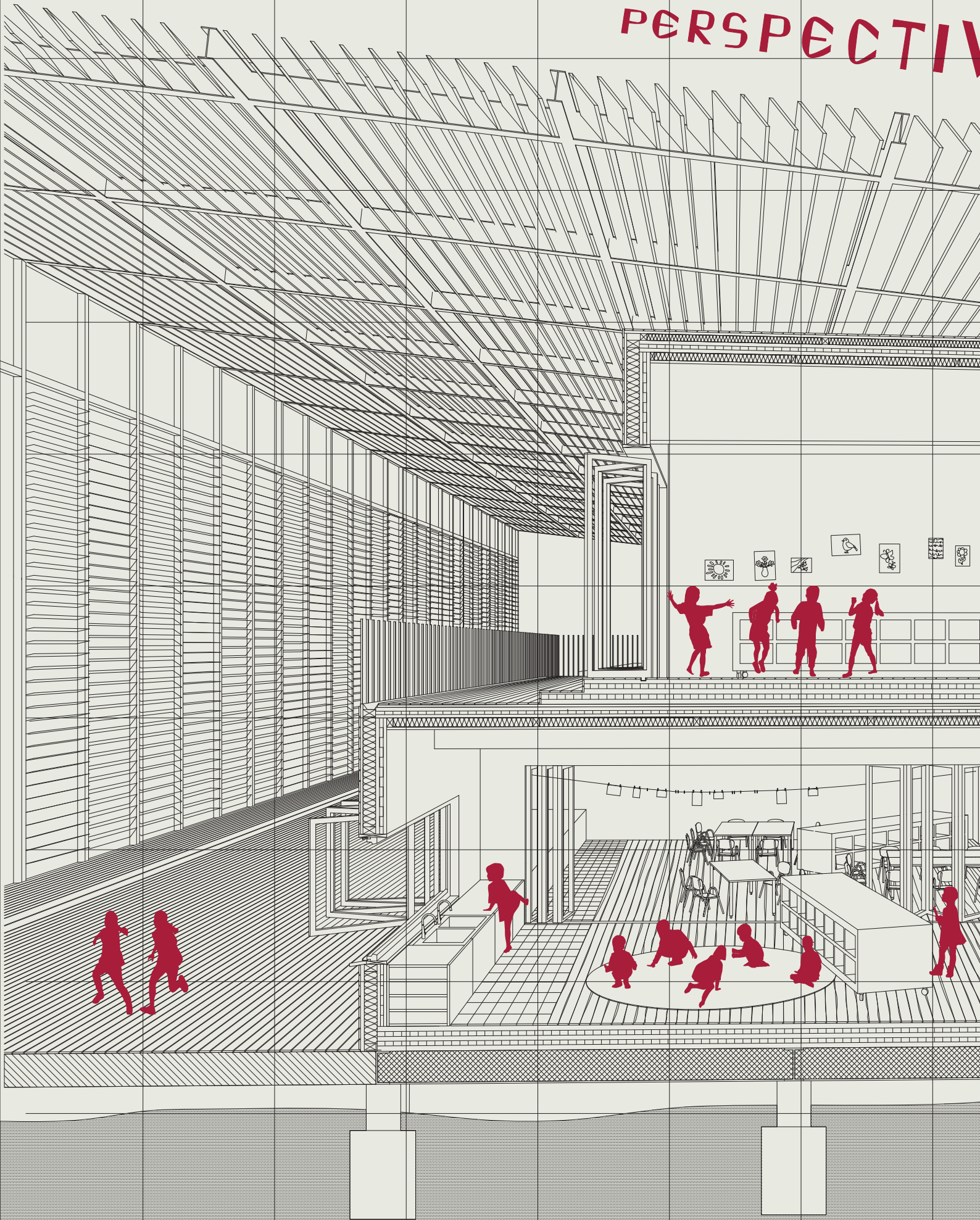
With a focus on construction and tangible, realistic design, this project aims to look to Australian suburbia as an ideological model for good school design. Inspired by notions of the 'Australian Dream', and the enduring desire of owning your own home with a picket fence, the design grapples with present issues such as the housing crisis, and emerging technologies to do with prefabrication.

The project asks us to consider if these two ideas of the desire to emulate the past and the charge to become technologically advanced can coexist with each other. The design negotiates this paradox.

Through material, form and operability, this juxtaposition is carried through. In reference to notions of suburbia, the neighbourhood-like plan is utilised for classroom configurations. The openness to the elements, moveability and transparencies of fabric shading devices and spaces that provide opportunity for outdoor learning are synonymous with 'Australian childhood'. In contrast, classroom forms utilise prefabrication and create the visible gesture of stacked boxes. The intention is for moveability and flexibility. Marrying the lasting legacy of the 'Australian Dream' with the physically lasting qualities of building with emerging technologies, the design combines ideology with practicality and physicality.



PERSPECTIVE





# VE SECTION

